

# FGASA FIELD GUIDE (NQF2) CERTIFICATE



**The FGASA Field Guide (NQF2)** [*Previously known as FGASA Level 1*] is able to identify the major living and non-living features of the natural environment in which s/he operates and interpret them at a level based mainly on observation and from an elementary scientific and cultural perspective.

As a general guideline, a Field Guide (NQF2) has a sound knowledge of the history, geology, plants and animals (i.e. birds, mammals, reptiles, etc.) in the specific area of guiding operation. The FGASA Field Guide (NQF2) must be registered with the National Department of Tourism in order to legally operate as a Nature Guide.

## **The FGASA Field Guide (NQF2) Certificate consists of the following:**

### **Compulsory components**

- Conduct a guided nature experience in a limited geographical area
- Create a guided experience for customers

## **FGASA FIELD GUIDE (NQF2)**

### **At this level the Field Guide:**

- Is operating as a nature site guide in a limited capacity but is in the process of development.
- May be operating as a competent guide in a number of different sites or a region. A Site usually refers to a particular Game or Nature reserve, National Park, Botanical garden, Bird Sanctuary. A region usually refers to a larger area within a particular Biome, such as the Kruger National Park and surrounding Private Game Reserves.
- Has the basic knowledge considered essential to register and legally conduct a guided nature experience in a limited geographical area as a FGASA Field Guide (NQF2).

# FGASA FIELD GUIDE (NQF2) CERTIFICATE



- Has the knowledge considered essential to register with the National Department of Tourism (NDT) and legally conduct guided nature experiences as a FGASA Field Guide (NQF2).
- Has been declared competent against the requirements of the FGASA Field Guide (NQF2) theoretical and practical assessment.
- Has a valid, up-to-date Department of Labour recognised First Aid certificate.

## How do I get a FGASA Field Guide (NQF2) qualification?

You will need to become a member of FGASA by completing the membership application form. You will receive relevant learning materials, including learner manuals, workbooks, and a logbook. Once you have successfully completed the required Field Guide Workbook (this prepares you for the theory examination), you will be eligible to apply to write the FGASA Field Guide (NQF2) theory examination. Once you have been declared theoretically competent by means of the theory examination you will be eligible to be practically assessed for the FGASA Field Guide (NQF2) Certificate in a guiding area of your choice.

The **practical assessment** for the FGASA Field Guide (NQF2) certificate is carried out by a registered FGASA assessor in a guiding area of your choice. You will need to take the assessor on a guided nature experience with or without clients but preferably with clients.

The practical assessment will be explained to you in detail by your assessor in the pre-assessment brief.

The assessor will make sure that you know what you will be assessed on so that you may prepare yourself for this assessment. (*Refer to the FGASA Field Guide (NQF2) Learner workbook for details.*) Payment for your practical assessment is made directly to the assessor and does not come via the FGASA office.

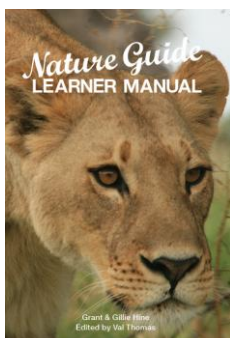
Once you have been declared competent for the FGASA Field Guide (NQF2) practical assessment you will have attained the FGASA Field Guide (NQF2) Qualification for the specific site/region in which you have been assessed competent to guide in.



## What learning materials do I need for the Field Guide (NQF2) Certificate?

The following learning materials are **compulsory**:

- The Nature Guide Learner Manual – Grant & Gillie Hine
- The Guiding Skills Manual – Grant Hine
- The FGASA Field Guide (NQF2) Study Guide & Workbook



# FGASA FIELD GUIDE (NQF2) CERTIFICATE



## Recommended books to improve your own knowledge:

- Beat about the Bush (Mammals) – Trevor Carnaby
- Beat about the Bush (Birds) – Trevor Carnaby
- Grasses & Grazers of Botswana and the surrounding Savanna – Veronica Roodt  
*Or* Guide to Grasses of Southern Africa – van Oudtshoorn
- The Story of Life and the Environment – Jo Van As. *et al*
- Tracks and Signs – Lee Gutteridge & Louis Liebenberg

## Recommended guide books to make use of while conducting guided experiences:

### 1. Any one of these **mammal** books:

- Field Guide to Mammals of Southern Africa – Chris & Mathilde Stuart.
- Smithers Mammals of Southern Africa

### 2. Any tree book that includes **trees** for your area of operation:

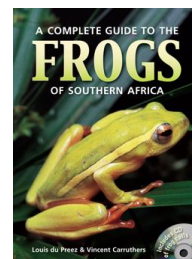
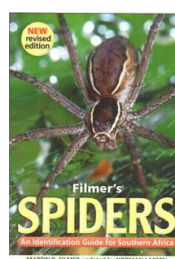
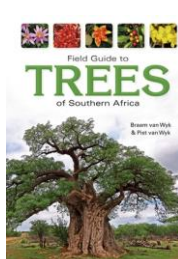
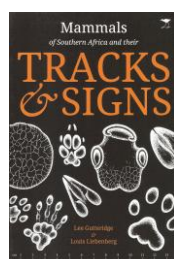
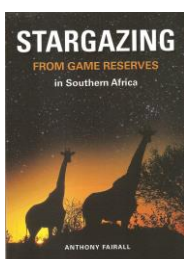
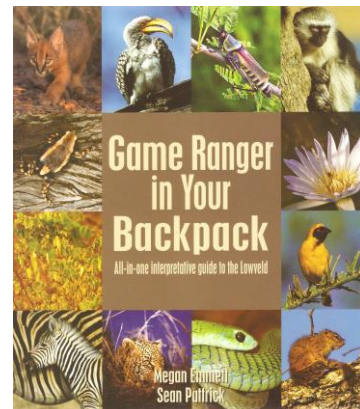
- Trees of Southern Africa – B & P van Wyk
- Sappi – the regional tree book for your area of operation

### 3. Any one of the following **bird** books:

- Newman's Birds of South Africa – Sappi
- Sasol Birds of SA – Sasol.
- Roberts Field Guide to Birds of Southern Africa

### 4. The following books are **also recommended**:

- Beat about the bush Mammals – Trevor Carnaby
- Birds The inside story – Rael & Helene Loon
- Scorpions of Southern Africa – J. Leeming
- Filmer's Spiders - Martin Filmer
- A Complete guide to Frogs of Southern Africa – du Preez & Carruthers
- Field Guide to Insects of Southern Africa – Picker, Griffiths & Weaving
- A complete guide to reptiles of Southern Africa – Marais & Alexandra
- A general South African History book.
- Stargazing from Game Reserves – Anthony Fairall
- The Guides Guide to Guiding – Garth Thompson
- Field Guide to the Tracks & Signs – Chris & Mathilde Stuart
- Game ranger in your backpack (Lowveld area) – Megan Emmett & Sean Patrick



## COMPULSORY MODULES FOR THE FIELD GUIDE (NQF2) CERTIFICATE

To complete the module requirements for the FGASA Field Guide (NQF2) Certificate all of the following compulsory Modules have to be successfully completed.

### Compulsory components

- Conduct a guided nature experience in a limited geographical area
- Create a guided nature experience for customers



## CONDUCT AND CREATE A GUIDED NATURE EXPERIENCE IN A LIMITED GEOGRAPHICAL AREA

This Module is assessed by means of:

- Workbook
- Theory examination
- Practical Assessment

The following modules are included in this section:

1. Creating a guided nature experience
2. Geology
3. Weather and Climate
4. Astronomy
5. Ecology
6. The Biomes
7. Taxonomy
8. Plants and Grasses
9. Arthropods
10. Fish
11. Amphibians
12. Reptiles
13. Birds
14. Mammals
15. Animal behaviour
16. Conservation management
17. Historical human habitation

## THE FIELD GUIDE (NQF2) THEORY EXAMINATION

There is **one theory examination** that evaluates the following two compulsory modules:

- Conduct a guided nature experience in a limited geographical area
- Create a guided nature experience for customers



# FGASA FIELD GUIDE (NQF2) CERTIFICATE



## THE FGASA FIELD GUIDE (NQF2) CERTIFICATE

